

Field-mounted Two-wire Signal Conditioners 6-UNIT

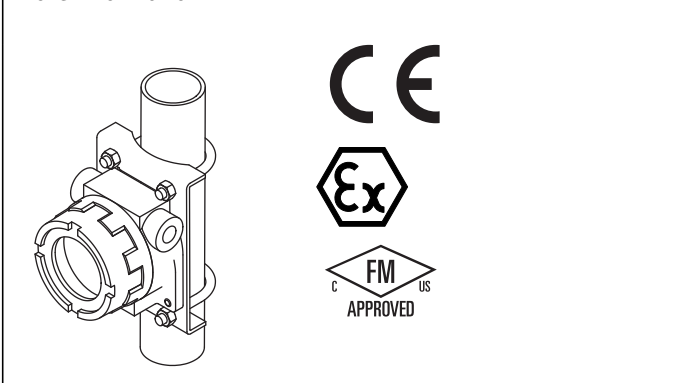
4-DIGIT LOOP POWERED INDICATOR

(outdoor enclosure, intrinsically safe/explosion-proof)

Functions & Features

- 4-digit LED display
- No external power source needed
- Scaling, linearization and other configurations selectable via three front control buttons
- Stainless steel enclosure optional

Note: Differences between the 6DV-B and the 6DVI-B exist only in safety parameters. Refer to the relevant section for more information.



MODEL:6DV-B-[1][2][3][4][5]

ORDERING INFORMATION

- Code number: 6DV-B-[1][2][3][4][5]
- Specify a code from below for each [1] through [5]. (e.g. 6DV-B-0T01/S)
- Use Ordering Information Sheet (No. ESU-4220). Factory standard setting will be used if not otherwise specified.
- Specify the country in which the product is to be used with the Safety Approval code 2 or 4.

[1] SAFETY APPROVAL

- 0: None
 - 1: FM intrinsically safe
 - 2: CENELEC intrinsic safety (ATEX)
 - 3: FM explosion-proof
 - 4: CENELEC flameproof (ATEX)
 - 7: TIIS intrinsic safety (CE not available)
 - 8: TIIS flameproof (CE not available)
- Confirm selectable combinations of approval and wiring conduit types in the table.

[2] TERMINAL BLOCK

- 0: None (Euro terminal block at the rear of indicator module) (TIIS flameproof or TIIS intrinsically safe approvals not selectable)
- T: Incorporated

[3] WIRING CONDUIT

- 0: G 1/2
 - 1: 1/2 NPT
 - 2: M20 × 1.5
 - 3: PG 13.5
- Confirm selectable combinations of approval and wiring conduit types in the table.

[4] MOUNTING BRACKET

- 0: Without
- 1: With

[5] OPTIONS

Enclosure Materials

- Blank:** Diecast aluminium enclosure
- /S:** Stainless steel enclosure (TIIS flameproof approval not selectable)

■ SELECTABLE WIRING CONDUITS SPECIFIC TO EACH APPROVAL

'N' marked combinations are not selectable.

WIRING CONDUIT	APPROVAL							
	0	1	2	3	4	7	8	
0	Y	Y	Y	N	N	Y	Y	
1	Y	Y	Y	Y	Y	Y	N	
2	Y	Y	Y	N	Y	Y	N	
3	Y	Y	Y	N	N	Y	N	

RELATED PRODUCTS

- Cable gland (model: BX-E-SXY)
- Stopping plug (model: BX-E-SBP)

GENERAL SPECIFICATIONS

- Degree of protection:** NEMA 4X, IP66/IP67
- Wiring conduit:** See 'Ordering information.'
- Cable gland:** Two provided for TIIS flameproof type
- Model No.:** BX-E-SXY
- Cable entries:** Elastomeric sealing rings
- Wiring conduit size:** G 1/2
- Material:** Chrome-plated brass (entry)
CR (sealing ring)
- Applicable wire size:** 8 - 12 dia.
- Stopping plug:** One provided for TIIS flameproof type
- Model No.:** BX-E-SBP
- Wiring conduit size:** G 1/2



Material: Diecast aluminium (plug)
NBR (O-ring)

Electrical connection: Euro terminal block (Applicable wire size: AWG26 - 16, 0.14 - 1.5 mm²) or M3 screw terminal (torque 0.5 N·m)

Materials

Meter housing: Flame-resistant resin (black)

Enclosure: Diecast aluminium standard; stainless steel casting optional (equivalent to type 316); silver color, epoxy resin coated

Mounting bracket assembly:

Stainless steel 304 (for aluminum enclosure)

Stainless steel 316 (for stainless steel enclosure)

Applicable pipe: 1 1/2" min.; 2" max.

Isolation: Input to outdoor enclosure

Linearization: Proportional, SQRT ($X^{1/2}$), RT32 ($X^{3/2}$), RT52 ($X^{5/2}$), user's linearization table (max. 21 calibration points) (Default setting: Proportional)

A/D conversion: Dual-slope integration

Security: Protecting settings

Scaling: Programming via the front buttons

DISPLAY

LED: 8 mm (.3") 7-segment, red

Number of display digits: 4

Scaling range: -1999 to 9999 counts

Offset range: -1999 to 9999 counts

Decimal point position: 10⁻¹, 10⁻², 10⁻³ or none

Polarity sign: Minus (-) sign added automatically according to the computation result

Over-range warning: All segments dark except the top ones that blink with the input exceeding the display/measurable range; or the bottom ones that blink with the input below the range.

Read rate: 2.5/s

Engineering unit indication: Sticker label attached

DC, AC, mV, V, kV, mA, A, kA, mW, W, kW, var, kvar, Mvar, mm, m, m/sec, l, l/min, l/h, m³/sec, m³/h, kg/h, t/h, kg, Pa, kPa, MPa, bar, Psi, t, °C, °F, K, %RH, pH, %, ppm, etc.

INPUT SPECIFICATIONS

■ **DC Current:** 4 - 20 mA DC

Measurable range: 3.75 - 23 mA DC

Maximum input current

Non-approved: 100 mA

Explosion-proof: 23 mA

Intrinsically safe: Refer to 'Safety Parameters.'

Voltage drop: Approx. 3.7 V with 4 mA

Approx. 4.0 V with 20 mA

The minimum required supply voltage to the 2-wire

transmitter added with the indicator's voltage drop at the

maximum input current must be within the output voltage range of the 2-wire transmitter's excitation supply.

INSTALLATION

Operating temperature: -40 to +85°C (-40 to +185°F)

(See Safety Parameters for use in a hazardous location.)

Weight: Approx. 1.3 kg (2.9 lb), aluminium

Approx. 4.0 kg (8.8 lb), stainless steel

Approx. 2.0 kg (4.4 lb), TIIS flameproof

PERFORMANCE

Accuracy: ±0.01 mA

Temp. coefficient: ±0.015 %/°C (±0.008 %/°F) at 4 - 20 mA input

Dielectric strength: 1500 V AC @ 1 minute (input to outdoor enclosure)

HOW TO CALCULATE ACCURACY AGAINST SCALE

Example 1: 4 - 20 mA input, Scale 0 - 100

Accuracy = 0.01 mA ÷ (20 - 4) mA × 100 = 0.063 %

Display Error = (100 - 0) × 0.063 % = ±0.063 digits

Example 2: 10 - 20 mA input, Scale 100 - 1000

Accuracy = 0.01 mA ÷ (20 - 10) mA × 100 = 0.1 %

Display Error = (1000 - 100) × 0.1 % = ±0.9 digits

STANDARDS & APPROVALS

Refer to the manuals to comply with the standards.

CE conformity:

ATEX Directive (94/9/EC)

Ex ia EN 60079-11: 2007 (for ATEX intrinsic safety)

Cat. 1G EN 60079-26: 2007 (for ATEX intrinsic safety)

Ex d EN 60079-1: 2007 (for ATEX flameproof)

EMC Directive (2004/108/EC)

EMI EN 61000-6-4: 2007/A1: 2011

EMS EN 61000-6-2: 2005

Safety approval:

FM: Intrinsically safe (US, Canada)

Class I, Div. 1, Groups A, B, C and D

Class II, Div. 1, Groups E, F and G

Class III, Div. 1

Class I, Zone 0, AEx ia IIC (US)

Class I, Zone 0, Ex ia IIC (Canada)

T4 and T5

(Class 3600: 1998)

(Class 3610: 2010)

(ANSI/ISA 60079-0: 2009)

(ANSI/ISA 60079-11: 2009)

(CAN/CSA-C22.2 E60079-0: 2006)

(CAN/CSA-C22.2 E60079-11: 2006)



FM: Explosion-proof and Dust-ignition proof (US)

Class I, Div. 1, Groups B, C and D

Class II, Div. 1, Groups E, F and G

Class III, Div. 1

T6

(Class 3600: 2011)

(Class 3615: 2006)

TIIS: Intrinsic safety

Ex ia IIC T5

TIIS: Flameproof

Ex d IIC T6

GENELEC: Intrinsic safety (ATEX)

⊕ II 1G, Ex ia IIC, T4, T5, Ga

(EN 60079-0: 2009)

(EN 60079-11: 2007)

(EN 60079-26: 2007)

GENELEC: Flameproof (ATEX)

⊕ II 2G, Ex d IIC; T5, T6 Gb

(EN 60079-0: 2009)

(EN 60079-1: 2007)

SAFETY PARAMETERS

Operating temperature

For FM/ATEX Intrinsically safe

(Temp Class: Operating temperature)

T4: -40 to +80°C

T5: -40 to +60°C

FM Explosion-proof

T6: -40 to +80°C

ATEX Flameproof

T5: -40 to +80°C

T6: -40 to +70°C

For TIIS Intrinsically safe

T5 -20 to +60°C

For TIIS Flameproof

T6 -20 to +60°C

Ex-data:

Ui (Vmax): 30 V DC

Ii (Imax): 100 mA DC

Pi (Pmax): 0.75 W

Ci: 1.0 nF

Li: 0 mH (TIIS Intrinsically Safe: 'Negligible value')

DISPLAY DESCRIPTIONS

■ DISPLAY DIGITS

The decimal point position may shift according to the required number of digits for the integer section, even when more than one decimal places have been specified.

However, when the number of decimal places is set to 3, the '0' in the integer section is not shown in order to secure the number of effective digits, as explained in the table below.

The '0' is displayed when the number of decimal places is set to 2, though the number of effective digits in this case is reduced by 1 digit compared from the 3 decimal places.

Select appropriately for the application. Refer to 'Programming Procedure' for how to choose decimal point positions.

DECIMAL	VALUE	DATA DISPLAY
3	-1.000 thr . -1.999	-1000 ... -1999
	-0.001 thr . -0.999	-001 ... -999
2	-1.00 thr . -1.99	- 100 ... - 199
	-0.01 thr . -0.99	-001 ... -099

■ ERROR INDICATION

The data display blinks when an abnormality is detected.

The unit display backlight also blinks.

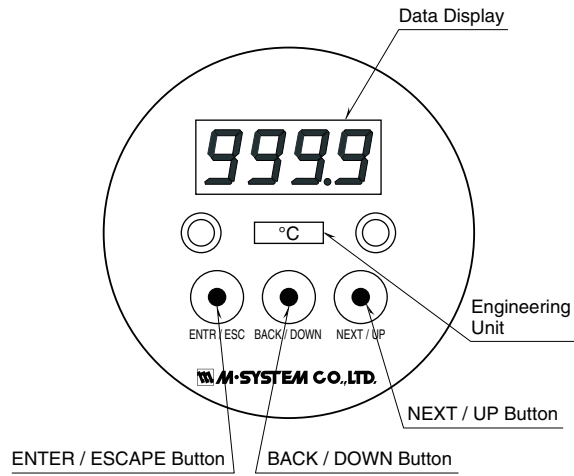
When the setting error or the security code error occurs, press ESCAPE key once to cancel the error status and proceed to set again.

ERROR TYPE	DATA DISPLAY
Over-scale	■■■■
Under-scale	■■■■
Setting error	Err
Security code error	Err

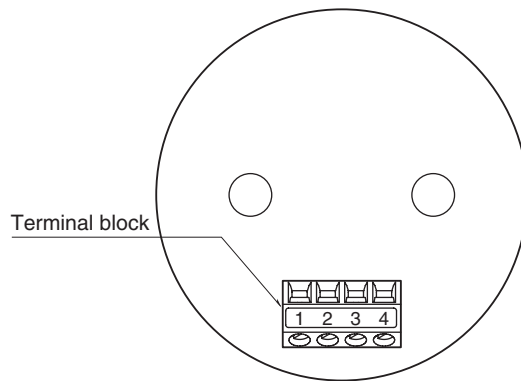


EXTERNAL VIEW (indicator module)

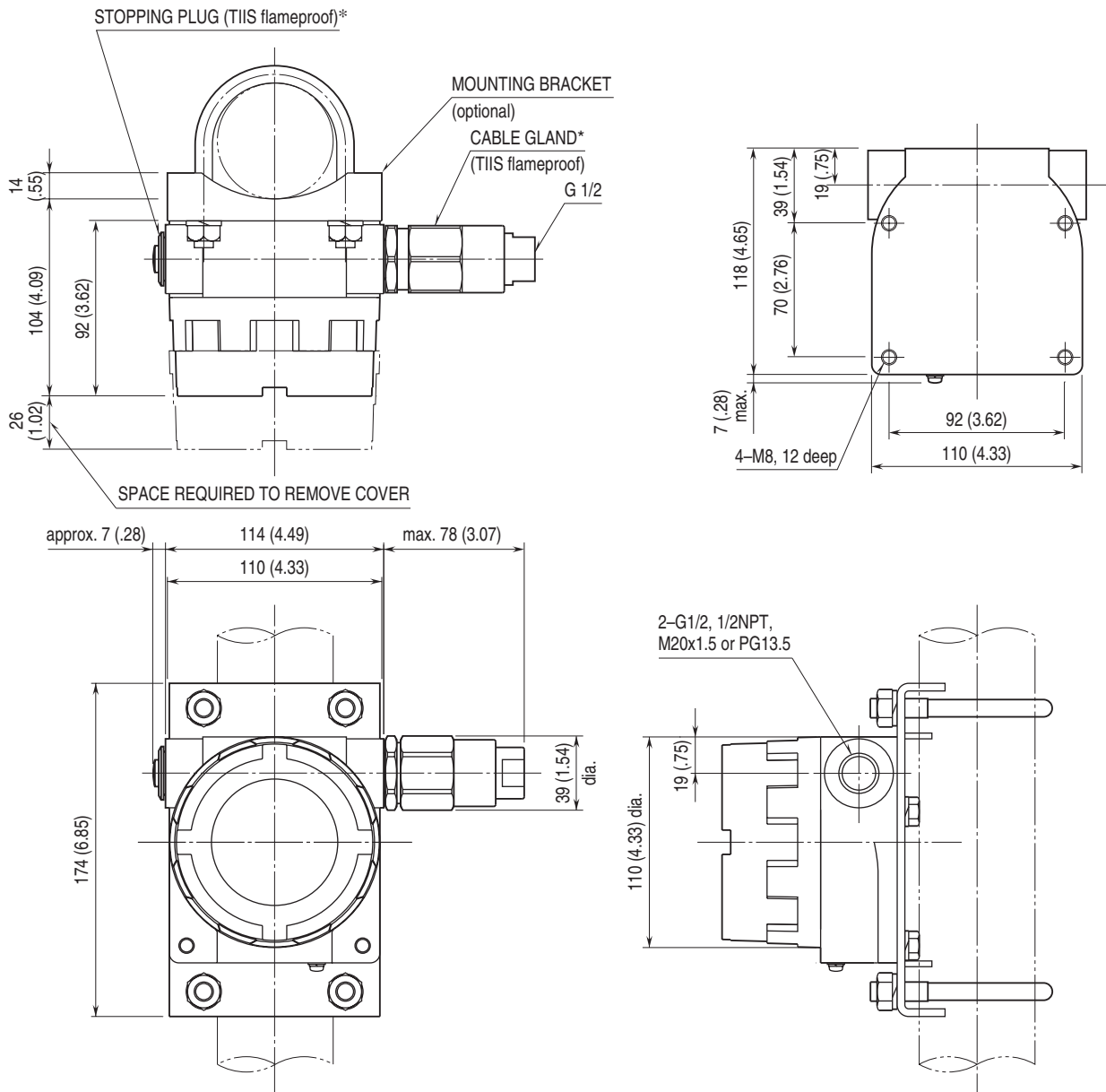
■ **FRONT VIEW**



■ **REAR VIEW**



DIMENSIONS unit: mm (inch)

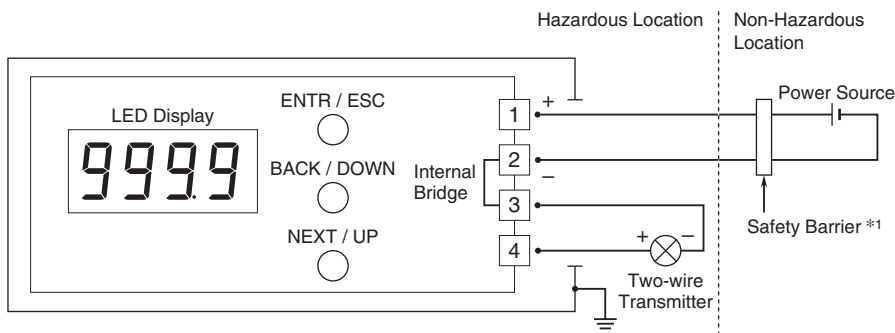
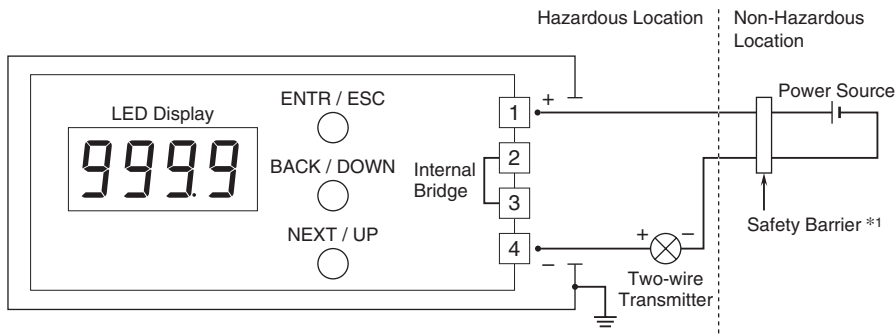


*Two cable glands and one plug are provided with TIIS flameproof type.
Use them according to the field wiring requirements.

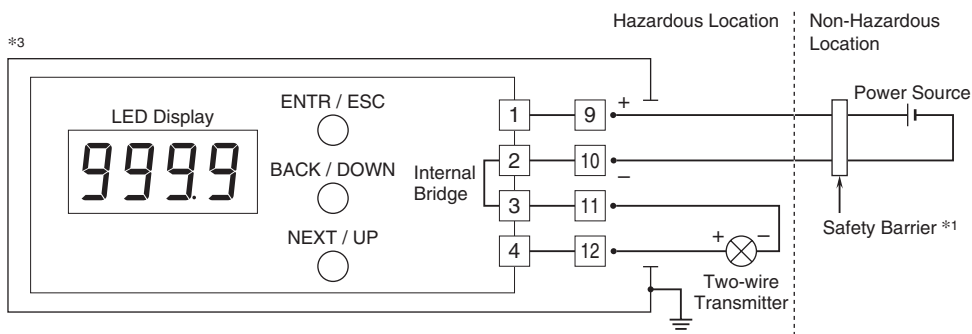
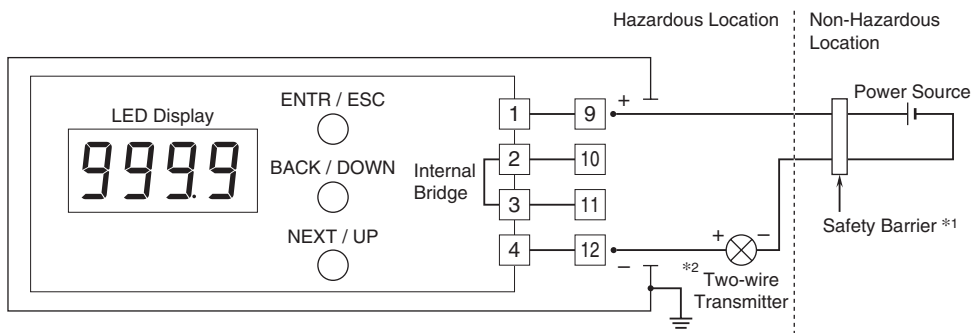


CONNECTION DIAGRAM

■ WITHOUT TERMINAL BLOCK (Euro terminal block at the rear of indicator module)



■ WITH TERMINAL BLOCK



*1. A safety barrier must be installed for the intrinsic safety.

The safety barrier must meet the Ex-data of this unit and must be approved for the hazardous location.

*2. In order to use a two-wire transmitter in the TIIS intrinsically safe circuit, the combination of the 6DV-B with the transmitter must be re-evaluated and approved by the TIIS.

*3. This connection diagram is not applicable for the TIIS intrinsic safety.



Specifications are subject to change without notice.



幸託有限公司
XIN TOP CORPORATION

TEL : (02)2598-1199
FAX : (02)2596-2331

E-mail : info@xintop.com
Website : www.xintop.com