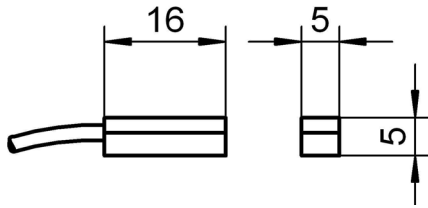
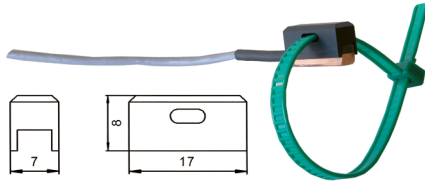


## Pt100 sensor FPA 611 x



For surface measurement



Accuracy: Pt100 film resistor, class B\*  
 Measuring tip: Operative range see below  
 Copper, level  
 Improved thermal transfer thanks to innovative sensor element and new contact technology  
 $T_{90}^*$ : 20 s  
 Cable: see below

Surface sensor  
 -10...+90°C, Cable PVC, 2 m **Order no. FPA611**  
 -10...+110°C, Cable, PFA, 3m for more demanding mechanical stress ALMEMO® connector, resolution 0.01 K  
**Order no. FPA611S01**

Accessories  
 Fixture for fastening with cable ties

**Best-Nr. ZB9611RM**

## Pt100 film sensor FPA 686



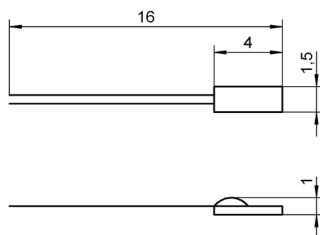
For surface measurement

Accuracy: Pt100 wire-wound, class B\*  
 Messfläche: Operative range -50...+200 °C,  
 temperature-resistant foil,  
 15 x 40 mm, approx. 0.5 mm thick  
 $T_{90}^*$ : 2 s  
 Cable: Stranded wire PFA, 4-wire twisted

Length 2 m  
 Length 10 m

**Order no. FPA686**  
**Order no. FPA686L10**

## Pt100 ceramic chip sensor element FP 0802



Unprotected sensor element for constructing your own sensors

Accuracy: Pt100 film resistor, class B\*  
 Measuring tip: Operative range -40...+400 °C  
 Ceramic chip sensor  
 Connection wires: 10 mm, bare  
 Ceramic chip sensor **Order no. FP0802**