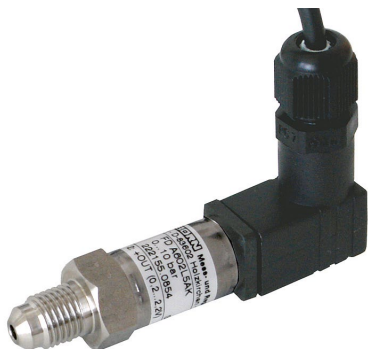
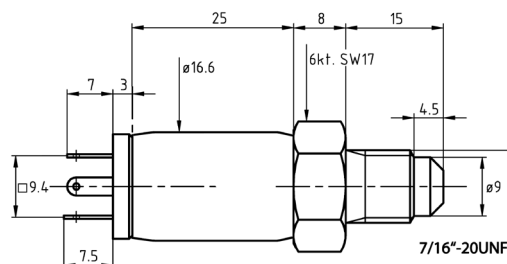


## Pressure transducer for measuring the temperature of refrigerants FDA 602 LxAK



- Compact pressure sensors for industrial applications in liquid and gaseous substances.
- Piezo-resistive, flexibly suspended silicone measuring cell in an oil-filled, all-welded special steel enclosure.
- The stable mechanical construction provides a reliable protection for the measuring cell against the test substance and immunizes it against pressure peaks and vibrations.
- Absolute pressure: pressure related to vacuum (0 bar).



### Technical Data:

Overload	Two times final value	Power supply	6.5 to 15 VDC, consumption <4 mA via ALMEMO® connector
Output signal	0.2 to 2.2 V	Operating temperature	-40 to +100 °C
Accuracy class (linearity + hysteresis + reproducibility)	±0.5 % of final value	Pressure terminal	male thread 7/16" membrane not flush with front
Total error range 0 to +50 °C	±1.0 % of final value	Material in contact with medium	Stainless steel DIN 1.4404/1.1135 External seal, Viton
-10 to +80 °C	±1.5 % of final value	Weight	approx. 50 g
(linearity + hysteresis + reproducibility + temperature coefficients + zero-point + range tolerance)		Protective class	IP 65
Response time (0 to 99 %)	<5 ms		
Nominal conditions	22°C ±2 K, 10 to 90 % RH, non-condensing		

### Calculation of the refrigerant temperature with device special version SB0000R2 (LINEARIZATIONS FOR OTHER REFRIGERANTS ON REQUEST)

The ALMEMO® Version V6 devices, (2590-2/-3S/-4S, 2690, 2890, 8590, 8690, 5690) can be used for continuous temperature measurement (resolution 0.1K) with absolute pressure sensors (resolution 0.001 bar compulsory !). Both, pressure and temperature can be selected or continuously indicated and recorded.

#### Technical data for ALMEMO® option SB0000R2:

Refrigerant:	R22	R23	R134a	R404a	R404a
Pressure Range:	0 to 36 bar	0 to 49 bar	0 to 40,5 bar	0 to 32 bar	0 to 32 bar
Temperature Range:	-90°C to +79°C *	-100°C to +26°C *	-75°C to +101°C *	-60°C to +65°C *	-60°C to +65°C *
Operation point	dew-point	dew-point	dew-point	dew-point	boiling point
Refrigerant:	R407C	R407C	R410A	R417A	R507
Pressure Range:	0 to 46 bar	0 to 46 bar	0 to 49 bar	0 to 27 bar	0 bis 37 bar
Temperature Range:	-50°C to +86°C *	-50°C to +86°C *	-70°C to +70°C *	-50°C to +70°C *	-70°C to +70°C *
Operating point	dew-point	boiling point	dew-point	dew-point	dew-point

\*) The final temperature is obtained from the data of the refrigerant.

For pressure transducer with smaller pressure ranges, the specified final temperature changes. (Linearizations for other refrigerants on request)

Special design refrigerant temperature for ALMEMO® devices V6 (Please order when buying new devices or send it to upgrade existing device)

Order no. SB0000R2

### Types

including ALMEMO® connecting cable, 1.5 m, and programming of a refrigerant measuring channel  
**Measuring ranges Absolute pressure** (resolution 0.001 bar)

up to 10bar  
 up to 30bar  
 up to 50bar

**new:** Measuring range up to 100 bar and up to 150 bar on request

Order no.

FDA602L5AK  
 FDA602L6AK  
 FDA602L7AK