

MARATHON PRODUCTS

# edi-CO<sub>2</sub><sup>TM</sup> Data Logger

*Extreme low temperature*

The edi-CO<sub>2</sub> is the world's first compact multi-use programmable data logger capable of operating at -81°C while in direct contact with "dry ice" for extended environmental monitoring. Program and set your data logger for up to 6 months and monitor critical applications requiring low temperature environments. Laboratory freezers, blood banks and research laboratories can now benefit from our advanced circuits and latest software enabling technologies.

The internal firmware provides the following features: start time, stop time, intervals, zoom, statistical analysis, descriptions for special instructions, measurement data and after-the-fact report generation options. User selectable features also include language conversions from English to: Japanese, French, German, Spanish, and Portuguese.

To start the recorder, simply press the start button!



**Temperature Range**

-80°C to +30°C  
(-112°F to +86°F)

**Temperature Accuracy**

(NIST traceable)  
±0.5°C at mid-point (-25°C)  
±2.0°C at extremes

**Measurement intervals**

2 seconds to months

**EEPROM Memory**

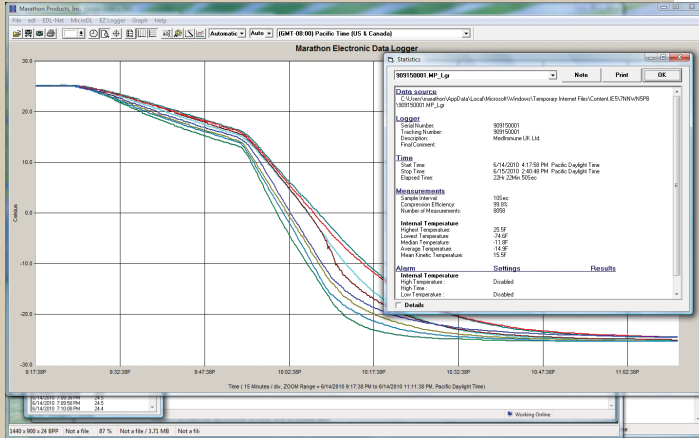
8k

MARATHON  
PRODUCTS, INC.



*Don't ship without us!*<sup>®</sup>

**MDAS-Pro Software Highlights:** Easy-to-use software provides clear graphs. Report Summary & Statistics File Manager, Note Attachment, Zoom, Elapsed Time or Date/Time View, Recorded View, Celsius, Fahrenheit or Kelvin, Display 3D View option. Data can be exported to other Windows programs such as spreadsheet, word-processing or database. Language support for Chinese, English, French, German, Japanese, and Portuguese. Available for Windows XP, Vista, 7, 8 and 10. An Enterprise Software version and 21CFR Part 11 Compliant Software are also available.



MDAS-Pro Temperature Plots with Logger General Information

**To Order** (Specify Model Numbers)

SKU#	Model	Description
8021	edl-CO <sub>2</sub>	Low temperature data logger, 8k memory

**Accessories/Options**

8027	MDAS-Pro	Marathon software history analysis program
8024	IC-9P	Serial cable-9 pin serial connection cable with 25 pin/9 pin adaptor
	Probes	Call for more information.

**edl-CO<sub>2</sub> Specifications** SKU #8021

Memory EEPROM, Storage: 8k (approx. 8,000 measurements)

Temperature Range:

High +30°C / +86°F  
Low -80°C / -113°F

Temperature Accuracy:

At mid-point ±0.5°C / ±0.9°F  
At extremes ±2.0°C / ±3.6°F

Measurement Interval:

Programmable from 2 seconds to months

Temperature Sensor:

NIST traceable Precision Thermistor

High and Low Alarm Limits:

LED indicator set by temperature and time

Internal Clock Accuracy:

Better than 2 minutes per month

Indicators:

Power and Alarm

Computer Interface:

Serial Port RS232 Cable, USB Converter

Internal Firmware Provides:

Start time, Interval, User description, Alarm values, Recording status, Measurement data, Firmware version, Serial number, Model type

Power Source:

Two AA 3.6 Volt Lithium Batteries. 2 Year Shelf Life – Battery is rated at six months, if used continuously at -80°C IATA – FAA Compliant

Size:

Length 12.85 cm (5.06 in.)  
Width 6.73 cm (2.65 in.)  
Depth 1.69 cm (0.66 in.)  
Weight: 106 g (3.7 oz.)

CE Certified

Yes

Accessories

External probes

FAA Compliance

RTCA/D-160 Ver. D, Section 21, Category H.



**幸託有限公司**  
XIN TOP CORPORATION

TEL : (02)2598-1199  
FAX : (02)2596-2331

E-mail : info@xintop.com  
Website : www.xintop.com