

MARATHON PRODUCTS

The EDL-RTD2™

Digital Dual Sensor Thermal Temperature Data Logger for industrial and remote monitoring of refrigerated, ambient and high temperature applications

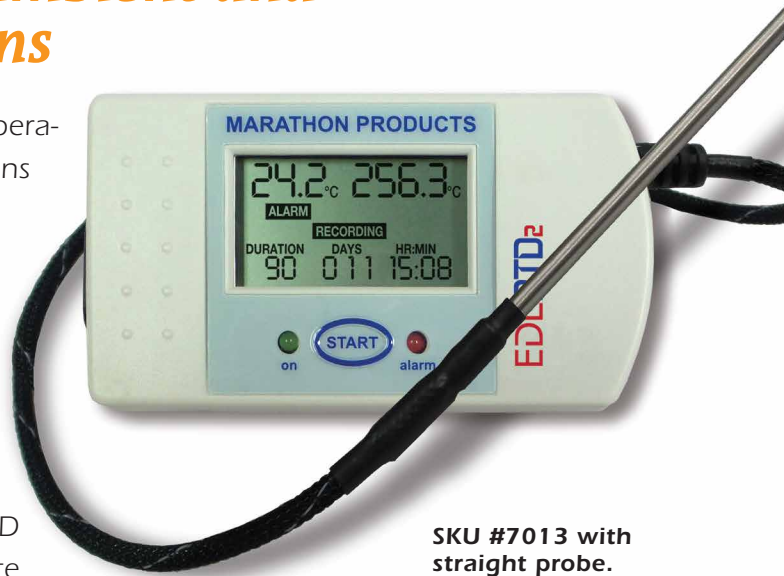
The EDL-RTD2 is a reliable and cost effective digital temperature recorder for all industrial and commercial applications requiring monitoring a wide temperature range. The EDL-RTD2 has one sensor for ambient range temperatures inside the case, and one external RTD stainless-steel probe that monitors temperatures from -29°C (-20°F) up to +300°C (+572°F) for applications such as warmers, incubators and ovens.

These high-precision laboratory-grade products will operate up to 3 years without a battery change. The LCD display provides real time viewing of ambient and remote temperature prior to downloading to a computer.

The internal software is user programmable and provides the following features: start time delay, sampling intervals, high and low alarm window values, recording status, and measurement data.

All our data loggers have the ability to program alarm limits. Should the temperature reach levels outside these limits, the onboard red LED will light until reset by the user. Operation is as easy as pressing the START button on the recorder.

In conjunction with our MaxiThermal software, you can document your high-temperature uses for your GxP and FDA regulated environment. To download recorded information, simply plug the unit into a PC using a standard USB connector. The USB cable and PC software are available as accessory items.



SKU #7013 with straight probe.

Temperature Range

Internal Sensor:
-29°C to 72°C
External probe:
-29°C to 300°C

Temperature Accuracy:

(NIST-traceable)
±0.2°C at center of range
±2.0°C at extremes

Memory: 64k



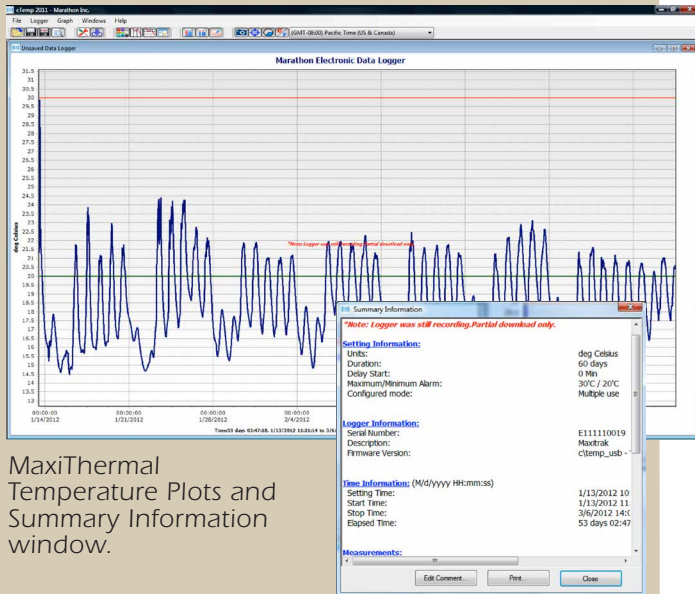
SKU #7012 with detachable probe.

MARATHON
PRODUCTS, INC.

Don't ship without us!®

MaxiThermal Software Highlights: Easy-to-use software provides clear graphs. Report Summary & Statistics File Manager, Note Attachment, Zoom, Elapsed Time or Date/Time View, Recorded View, Celsius or Fahrenheit. Data can be exported to other Windows programs such as spreadsheets, word-processing or databases. Available for Windows XP, Vista, 7, 8 and 10.

An Enterprise Software version and 21CFR Part 11 Compliant Software are also available.



MaxiThermal Temperature Plots and Summary Information window.

Calibration:

EDL-RTD2 is a laboratory grade multi-use logger with internal NTC and external RTD probe for precision temperature capture. Multi point calibration certificates can be provided for additional costs.

To Order:

- SKU# 7013 EDL-RTD2 with attached probe
- SKU#7012 EDL-RTD2 with detachable probe

EDL-RTD2 Specifications

Internal Sensor: Wired chip in glass thermistor
Operating Range: -29°C to +72°C / -20°F to +161°F
Accuracy: ±0.2°C from 2° to 10°C / ±2.0°C at extremes (NIST-traceable)
 ±0.4°F from 32° to 50°F / ±3.6°F at extremes

External Probe: RTD Stainless Steel Tip = 12 cm / 4.72 in.;
 Flexible Teflon-coated Cable = 51 cm / 20 in.

Operating Range: -29°C to +300°C / -20°F to +572°F
Accuracy: ±0.2°C at 0° to 30°C / ±2.0°C at extremes (NIST-traceable)
 ±0.36°F at 32° to 86°F / ±3.6°F at extremes

Memory EEPROM, Storage: 64k memory (32k per sensor).

No. of Measurements: Approximately 64,000.

Measurement Intervals: Programmable from 2 secs per reading.

Computer Interface: USB port

Power Source: One CR2477 Lithium coin cell battery with a 3 year operating life and a 5 year shelf life.

Size: Length 9.0 cm / 3.5 in. Width 5.0 cm / 2 in. Depth 2.8 cm / 1.1 in.

Weight: 95 grams / 3.3 oz.

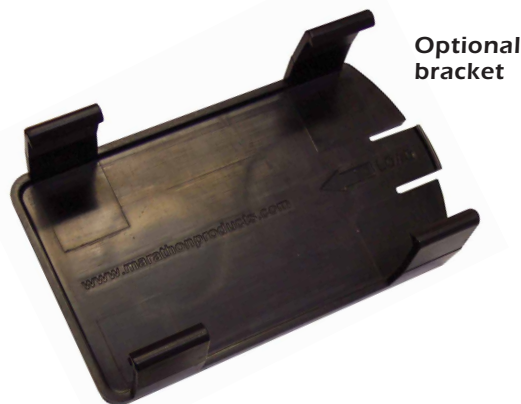
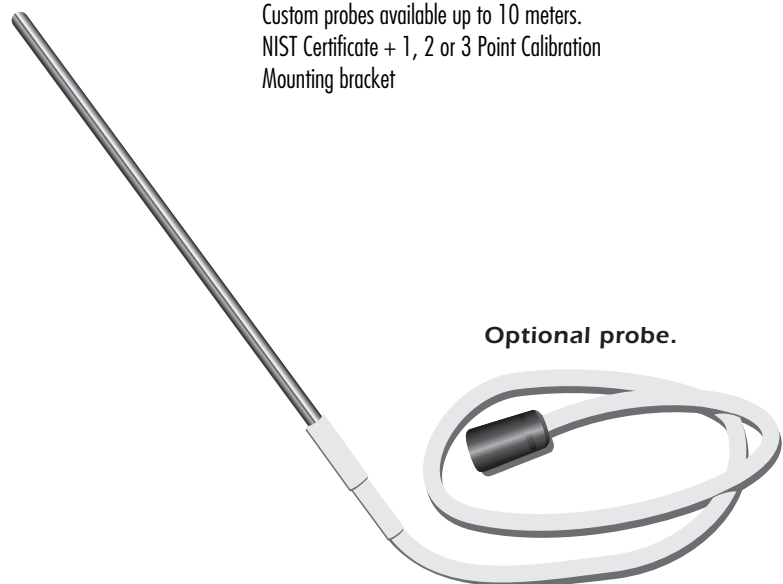
CE Certified: Yes

Water-resistant: The product package is hermetically sealed to an IP66 rating.

Required Accessories: MaxiThermal Software
 USB Standard A to Mini B cable

Warranty: 3 Months

Optional Accessories: Standard Probe, 3 meter cable with stainless steel tips.
 Custom probes available up to 10 meters.
 NIST Certificate + 1, 2 or 3 Point Calibration
 Mounting bracket



幸託有限公司
 XIN TOP CORPORATION

TEL : (02)2598-1199
 FAX : (02)2596-2331

E-mail : info@xintop.com
 Website : www.xintop.com